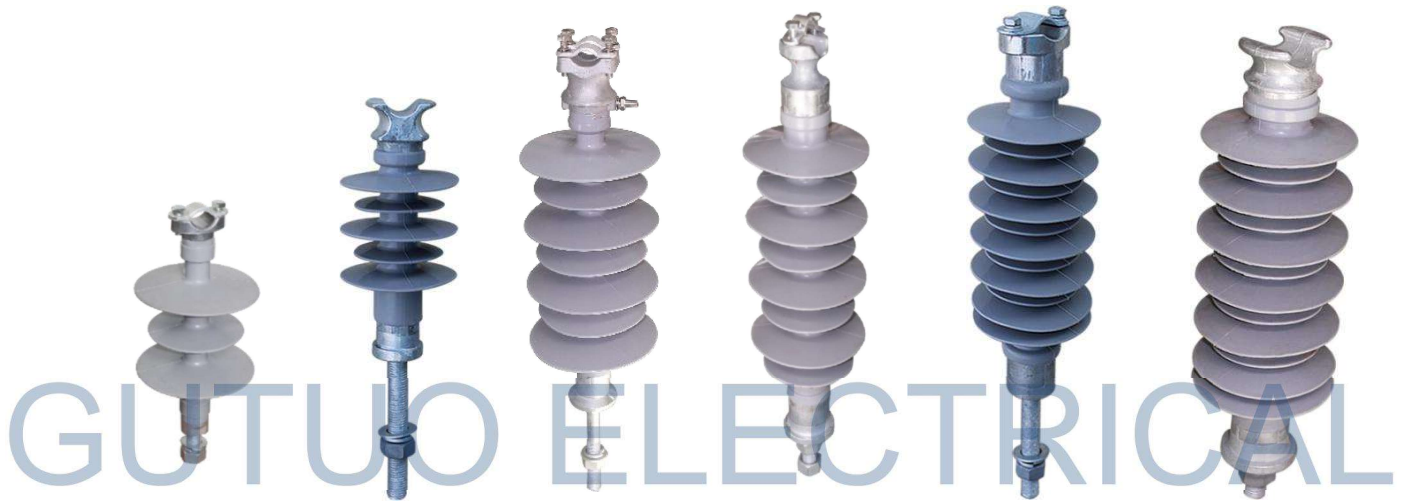
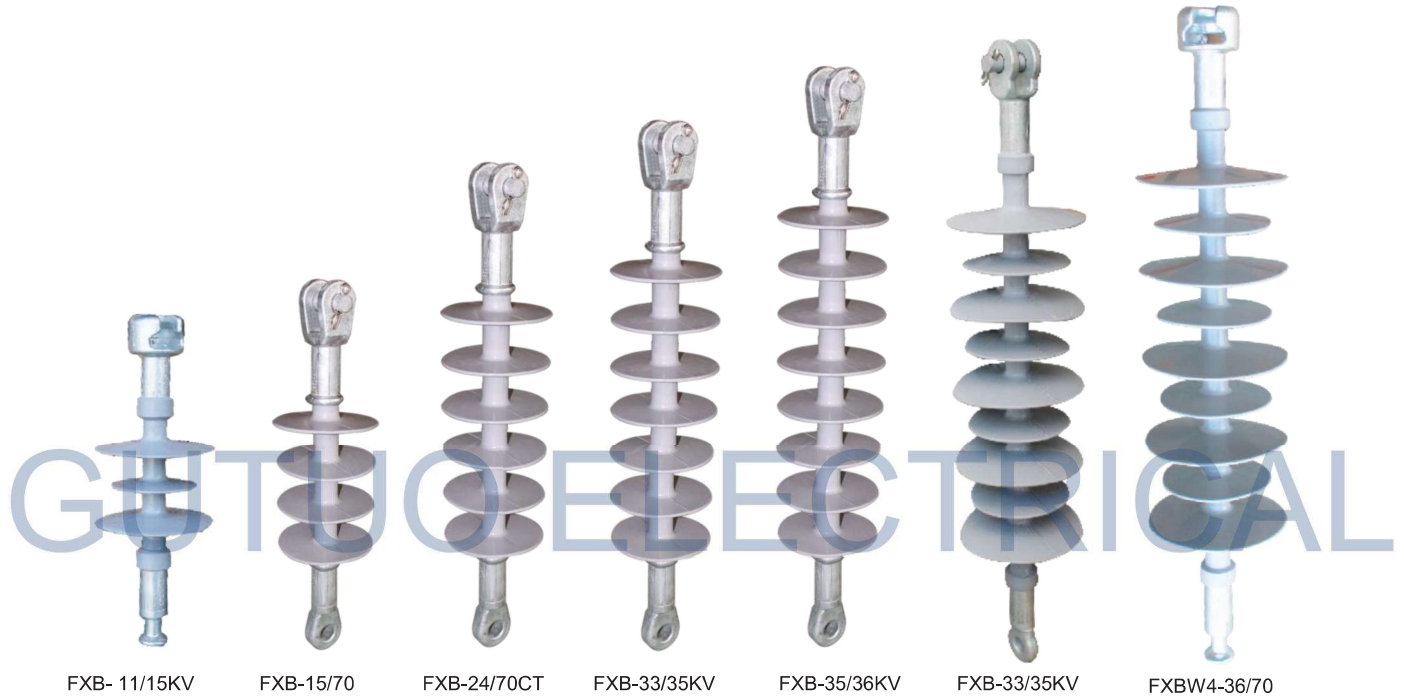




No.	Type	Rated voltage (kV)	Rated bending strength (KN)	Section length (mm)	Minimum Arc distance (mm)	Min creepage distance (mm)	Sheds distance (mm)	Full wave lightning impulse with stand voltage (kV)	Min power frequency 1 min wet withstand voltage (kV)
1	FZSW-11/4	11	4	215±15	130	290	105/78	75	42
2	FZSW-15/5	15	5	260±15	185	600	138/112	105	55
3	FZSW-24/8	24	8	355±15	255	750	138/112	145	65
4	FZSW-33/8	33	8	420±15	340	1200	126/92	150	70
5	FZSW-36/10	36	10	500±15	390	1200	138/112	175	75
6	FZSW-69/12.5	69	12.5	760±15	640	2010	146/117	410	185
7	FZSW-132/12.5	132	12.5	1200±15	1900	3200	190/152	650	230



No.	Type	Rated voltage (kV)	Rated bending strength (KN)	Section length(mm)	Minimum Arc distance (mm)	Min creepage distance (mm)	Sheds distance (mm)	Full wave lightning impulse with stand voltage (kV)	Min power frequency 1 min wet withstand voltage (kV)
1	FPQ-11/5	11	5	270±15	140	350	138/110	60	45
2	FPQ- 15/5	15	5	330±15	195	490	138/110	65	140
3	FPQ-24/8	24	8	390±15	260	720	140/112	70	155
4	FPQ- 33/8	33	8	445±15	295	1050	140/112	75	150
5	FPQ-36/10	36	10	500±15	330	1200	140/112	95	200



FXB- 11/15KV

FXB-15/70

FXB-24/70CT

FXB-33/35KV

FXB-35/36KV

FXB-33/35KV

FXBW4-36/70

No.	Type	Rated voltage (kV)	Rated failing Load (KN)	Section length (mm)	Dry arcing distance (mm)	Min. Creepage distance (mm)	Umbrella diameter (mm)	Lightning Impulse Withstand voltage (kV)	Power frequency 1min wet Withstand voltage
1	FXB-11/70CT	11	70	350±5	160	500	125/90	75	50
2	FXB1-15/70CT	15	70	350±15	185	420	100	95	55
3	FXB1-24/70CT	24	70	455±15	275	650	100	155	70
4	FXB1-24/70ST	24	70	455±15	275	720	100	155	70
5	FXB1-33/70CT	33	70	500±15	320	840	100	75	200
6	FXB-36/70CT	36	70	640±15	365	860	100	80	210
7	FXBW4-36/70SB	36	70	670±15	455	1350	140/110	95	230
8	FXBW4-36/70CT	35	70	670±15	455	1350	140/110	95	230
9	FXB- 66/70SB	66	70	890±15	704	2240	140/110	185	410
10	FXB3-110/100 (120)SB	110	100 (120)	1260±15 1290±15	1050	3150	142/110	335	750
11	FXB3-132/100 (120)SB	132	100 (120)	1395±15 1420±15	1150	3450	142/110	350	820



No.	Type	Rated voltage (kV)	Min creepage distance (mm)	Rated mechanical failing load		Full wave lightning impulse with stand voltage (kV)	Min power frequency 1 min wet withstand voltage (kV)	Section length (mm)	Minimum Arc distance (mm)
				Bending (KN)	Twist (KN.m)				
1	FZ-11/15	11	560	6	1.2	45	110	470	230
2	FZ-24/33	24	1250	8	1.5	95	180	585	310
3	FZ-33/36	33	1250	8	1.5	95	180	740	475
4	FZ-66/69	66	2160	12.5	2	170	350	865	740